

Madison, Wisconsin

CITY OF MADISON

MADISON WATER UTILITY

DEPARTMENT OF PUBLIC WORKS

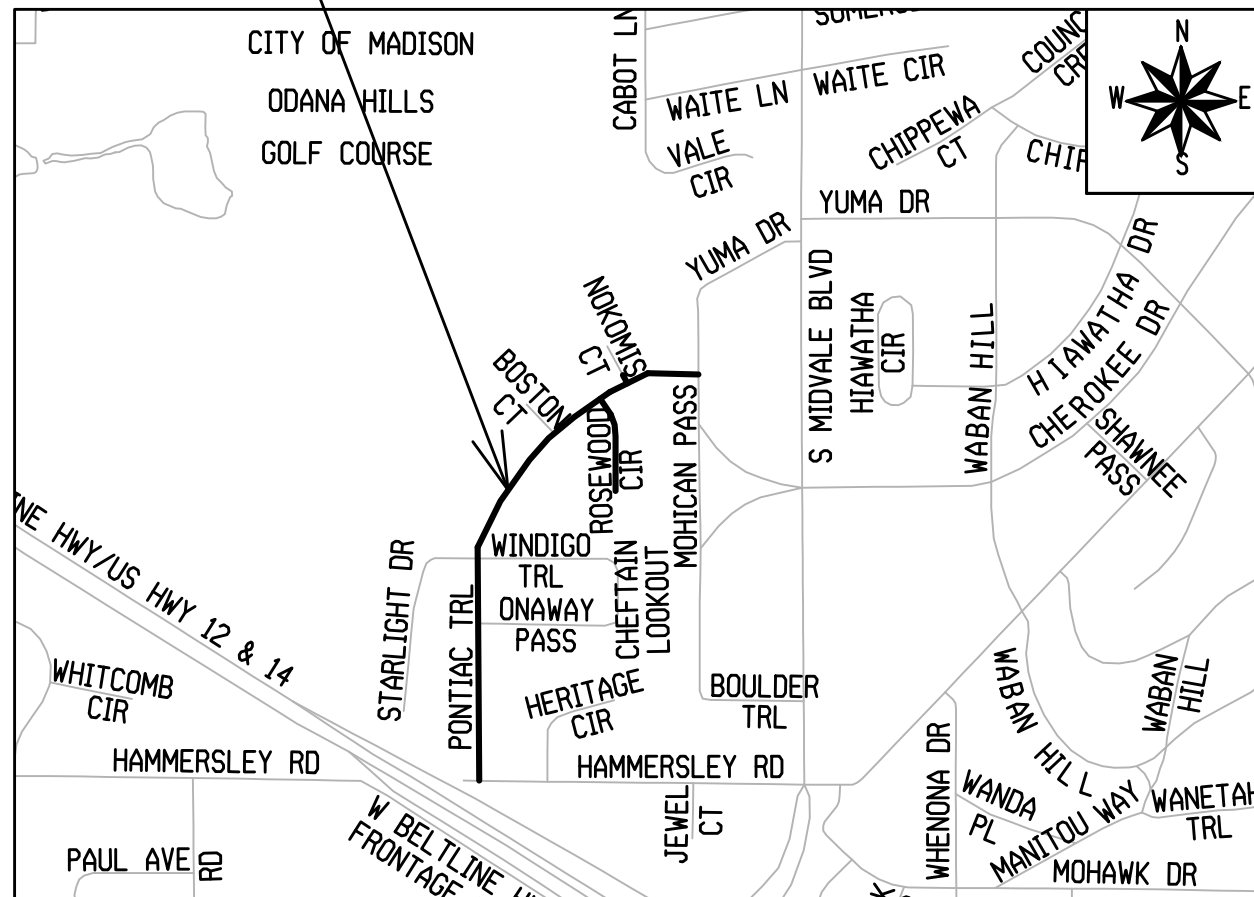
PLAN OF PROPOSED IMPROVEMENT

INDEX OF SHEETS

SHEET NO.	PROJECT AREA
W-1	PIPE LINING OVERVIEW
W-2	PHASE 1 WATER MAIN BYPASS
W-3	PHASE 1 PIPE LINING
W-4	PHASE 2 WATER MAIN BYPASS
W-5	PHASE 2 PIPE LINING

PROJECT LOCATION

CITY PROJECT NO. 13565
CONTRACT NO. 9056



PUBLIC IMPROVEMENT PROJECT
APPROVED ON JULY 20, 2021
BY THE COMMON COUNCIL
OF MADISON, WISCONSIN

PUBLIC IMPROVEMENT DESIGN
APPROVED BY:

Am. Wiedersheim 7/22/2021

INT. CHIEF ENGINEER Date

WATER
DESIGNED BY:

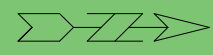
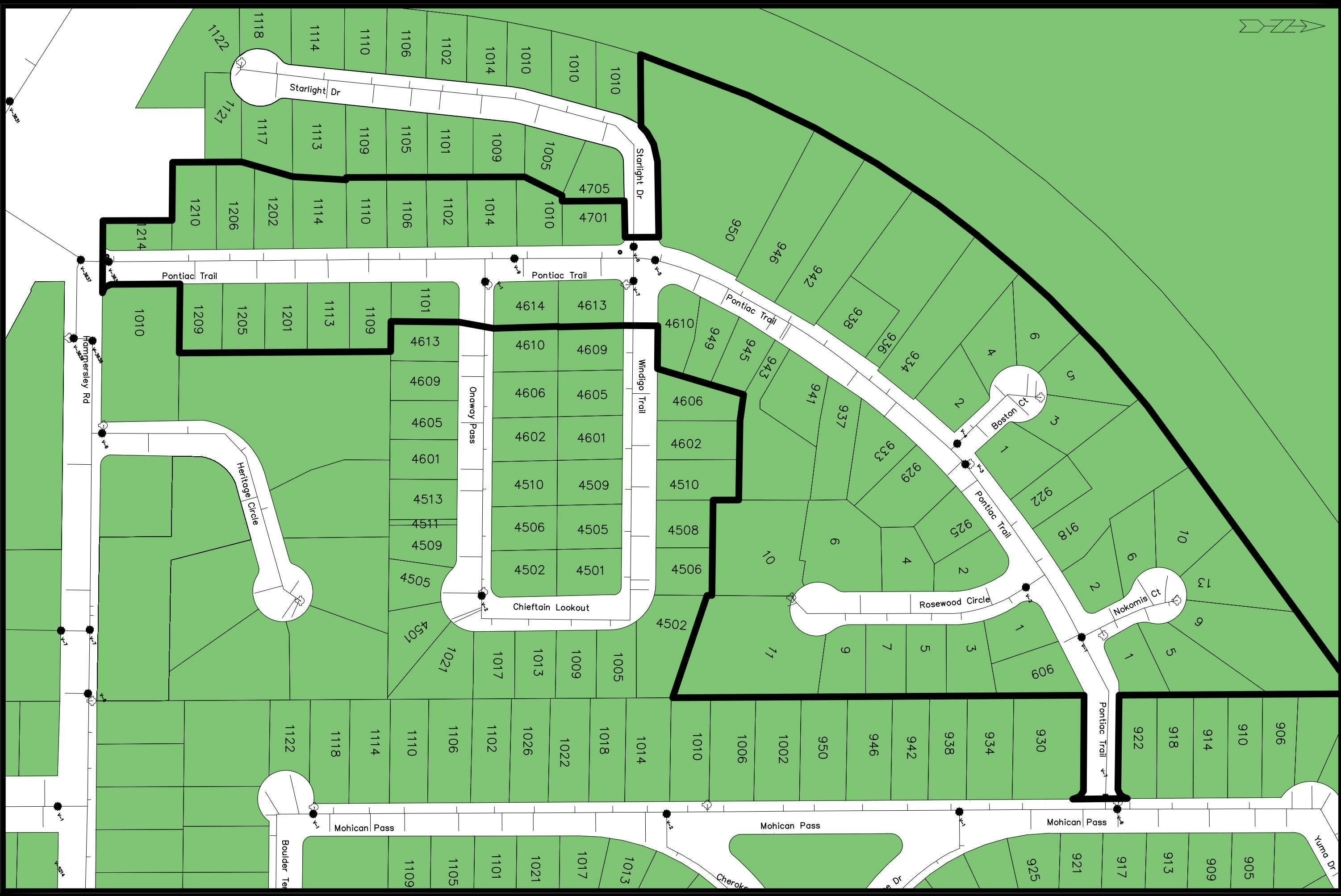


PLOT SCALE: 1 IN=1 FT_XREF

PLOT NAME: ---

REV. DATE: 7/22/2021 1:31 PM

ORIGINATOR: CITY_OF_MADISON

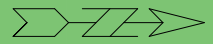
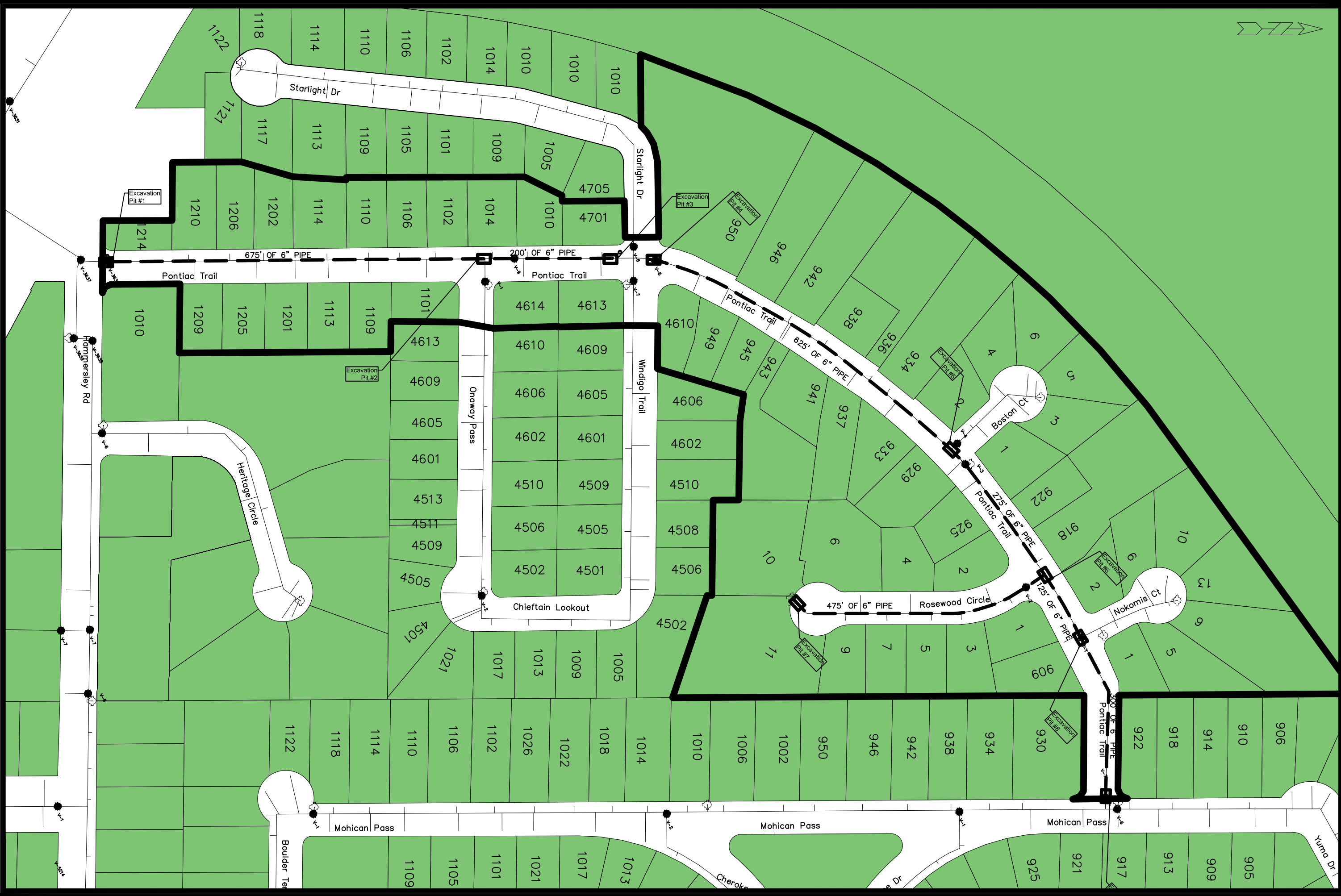


SCALE: 1" = 150'
 DESIGNED BY: PEH
 MADISON WATER UTILITY
 119 E OLIN AVE, MADISON, WI 53713
 PRINTING DATE: 7/22/21

CIPP 2021 - PONTIAC TRL, NOKOMIS CT, ROSEWOOD CIR
 PROJECT AREA OVERVIEW
CITY OF MADISON, WISCONSIN
 CONTRACT NO: 9056



13565
 W-1

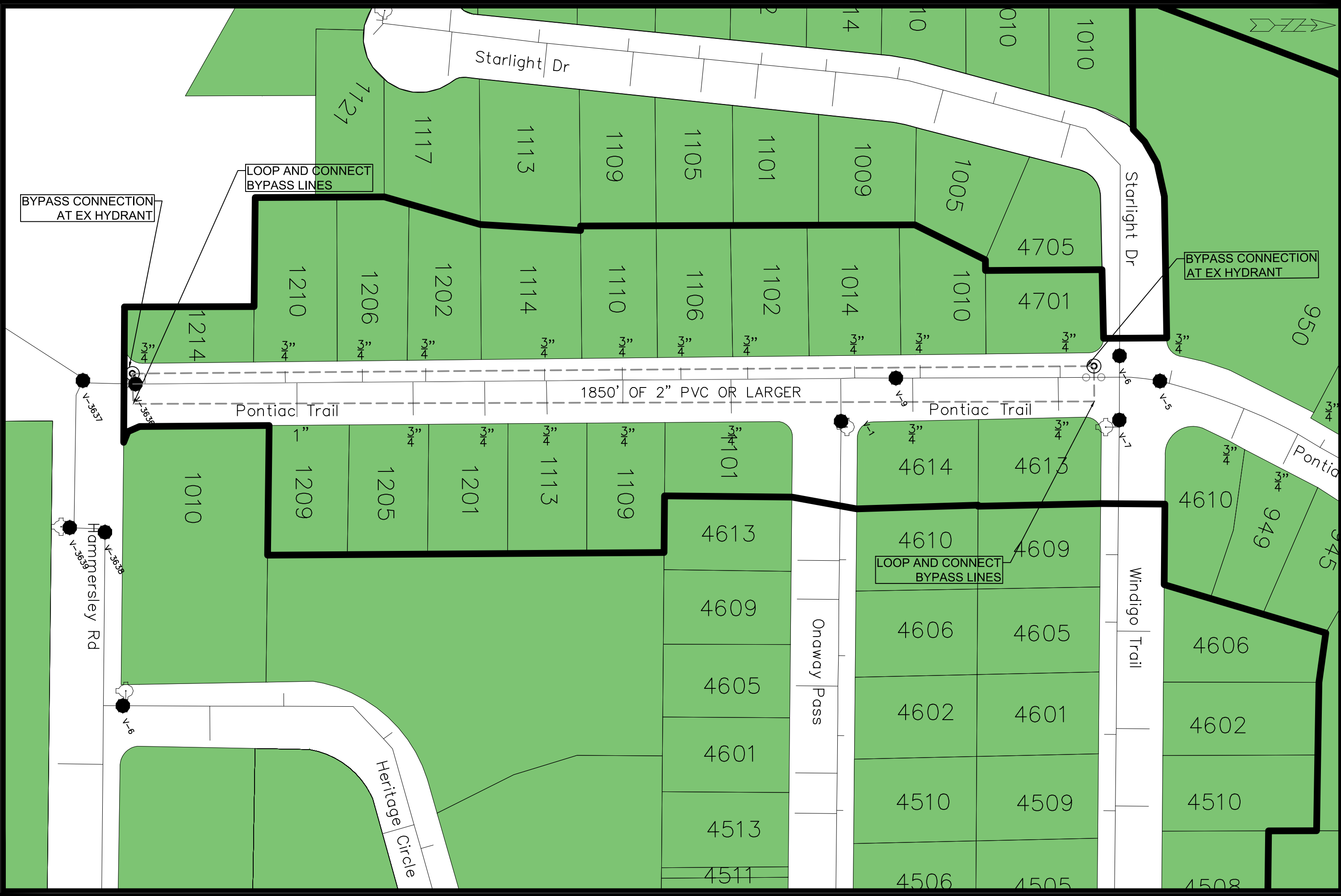


SCALE: 1" = 150'
 DESIGNED BY: PEH
 MADISON WATER UTILITY
 119 E OLIN AVE, MADISON, WI 53713
 PRINTING DATE: 7/22/21

CIPP 2021 - PONTIAC TRL, NOKOMIS CT, ROSEWOOD CIR
 PIPE LINING OVERVIEW
CITY OF MADISON, WISCONSIN
 CONTRACT NO: 9056



13565
 W-2



BYPASS CONNECTION AT EX HYDRANT

LOOP AND CONNECT BYPASS LINES

BYPASS CONNECTION AT EX HYDRANT

LOOP AND CONNECT BYPASS LINES

SCALE: 1" = 80'
 DESIGNED BY: PEH
 MADISON WATER UTILITY
 119 E OLIN AVE, MADISON, WI 53713
 PRINTING DATE:

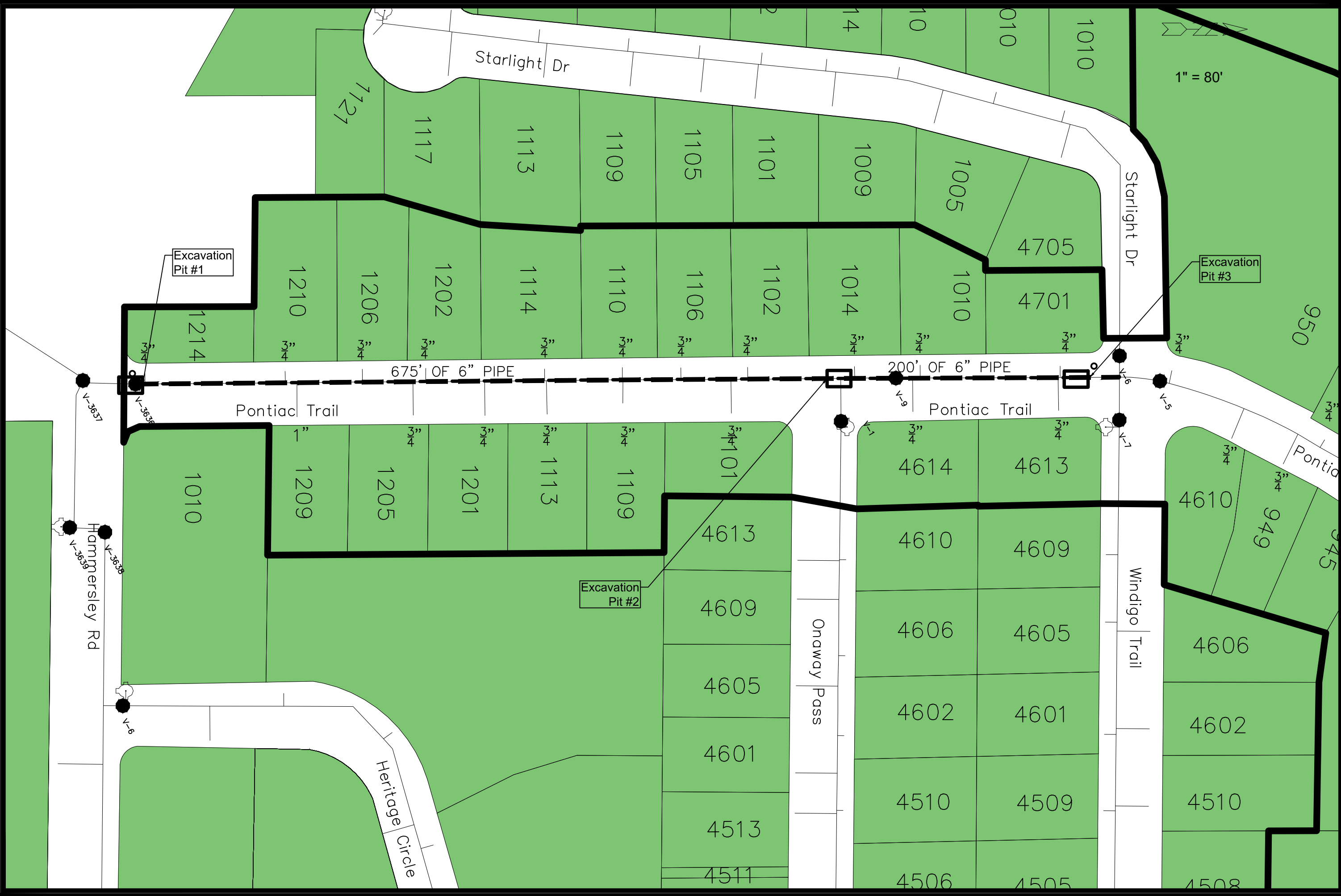
CONTRACT NO: 9056

CIPP 2021 - PONTIAC TRL, NOKOMIS CT, ROSEWOOD CIR
 PHASE 1 WATER MAIN BYPASS
CITY OF MADISON, WISCONSIN



13565
 W-3

\\GISSERVER\DESIGN\PROJECTS\13565\CAD\WATER\13565WU-CIPP.DWG



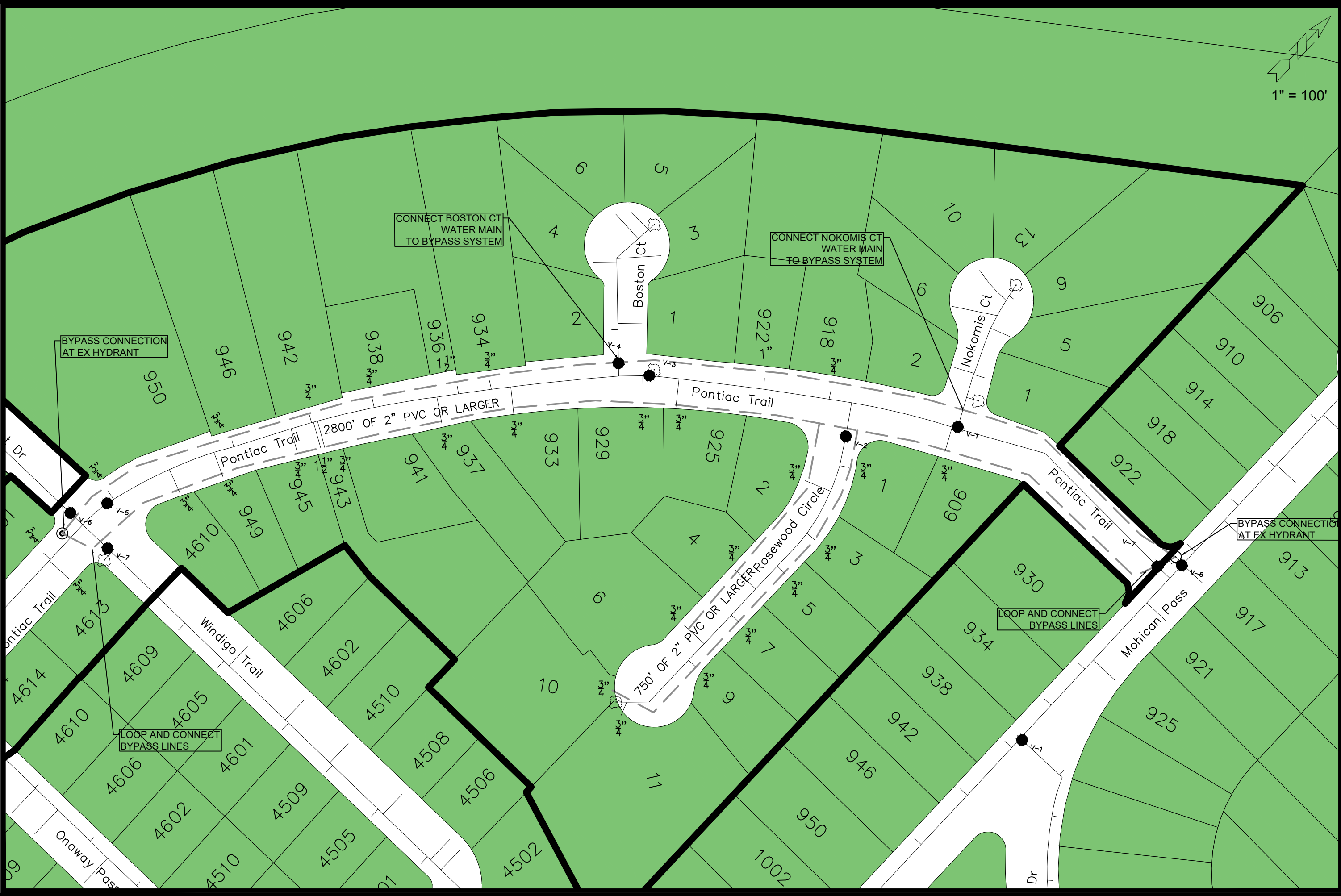
SCALE: 1" = 80'
 DESIGNED BY: PEH
 MADISON WATER UTILITY
 119 E OLIN AVE, MADISON, WI 53713
 PRINTING DATE:

CONTRACT NO: 9056

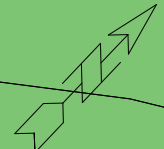
CIPP 2021 - PONTIAC TRL, NOKOMIS CT, ROSEWOOD CIR
 PHASE 1 PIPE LINING
CITY OF MADISON, WISCONSIN



13565
 W-4



1" = 100'



SCALE: 1" = 100'
 DESIGNED BY: PEH
 MADISON WATER UTILITY
 119 E OLIN AVE, MADISON, WI 53713
 PRINTING DATE:

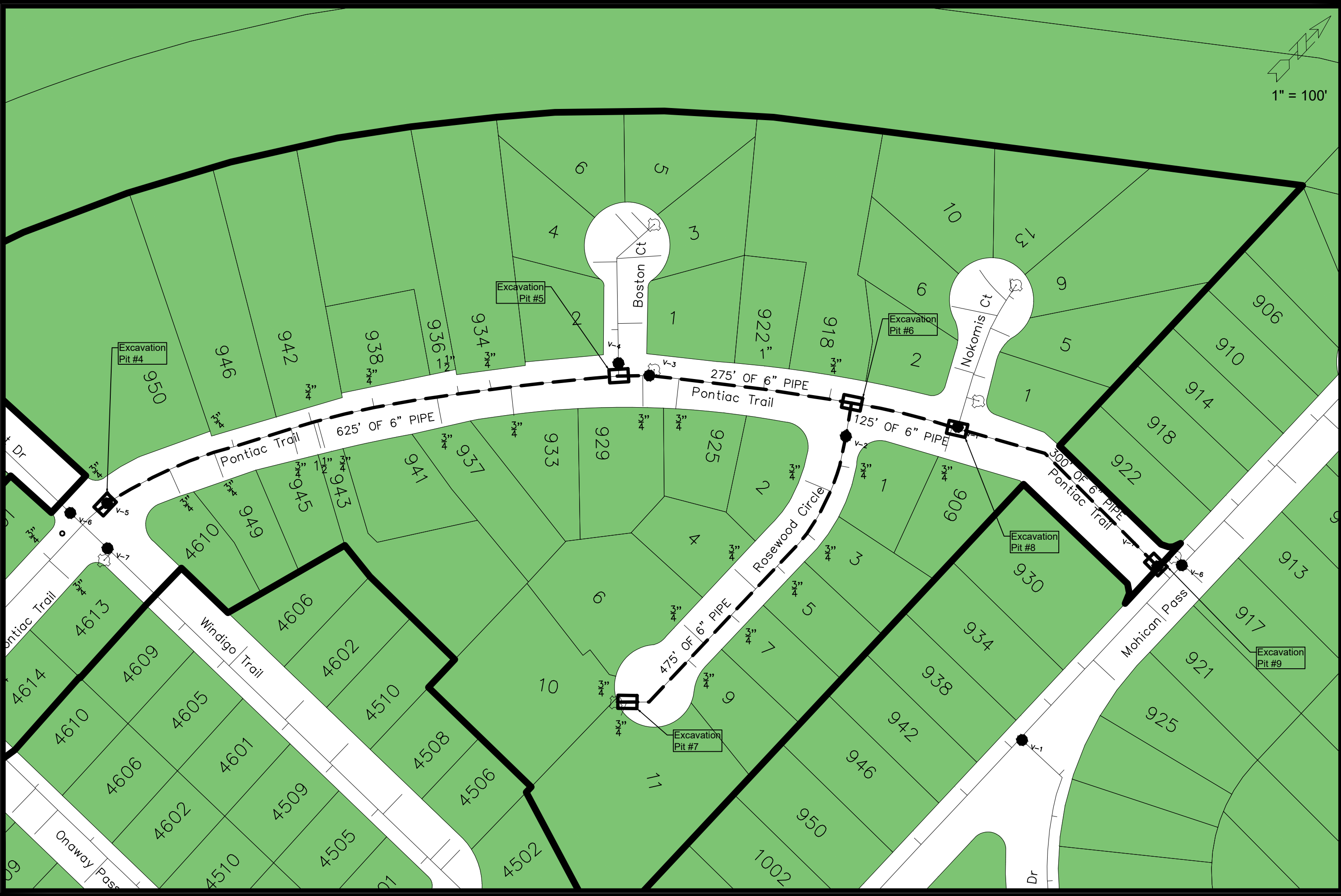
CONTRACT NO: 9056

CIPP 2021 - PONTIAC TRL, NOKOMIS CT, ROSEWOOD CIR
 PHASE 2 WATER MAIN BYPASS
CITY OF MADISON, WISCONSIN



13565
 W-5

\\GISSERVER\DESIGN\PROJECTS\13565\CAD\WATER\13565WU-CIPP.DWG



1" = 100'

SCALE: 1" = 100'
DESIGNED BY: PEH
MADISON WATER UTILITY
119 E OLIN AVE, MADISON, WI 53713
PRINTING DATE: 7/22/2021

CONTRACT NO: 9056

CIPP 2021 - PONTIAC TRL, NOKOMIS CT, ROSEWOOD CIR
PHASE 2 PIPE LINING
CITY OF MADISON, WISCONSIN



13565
W-6